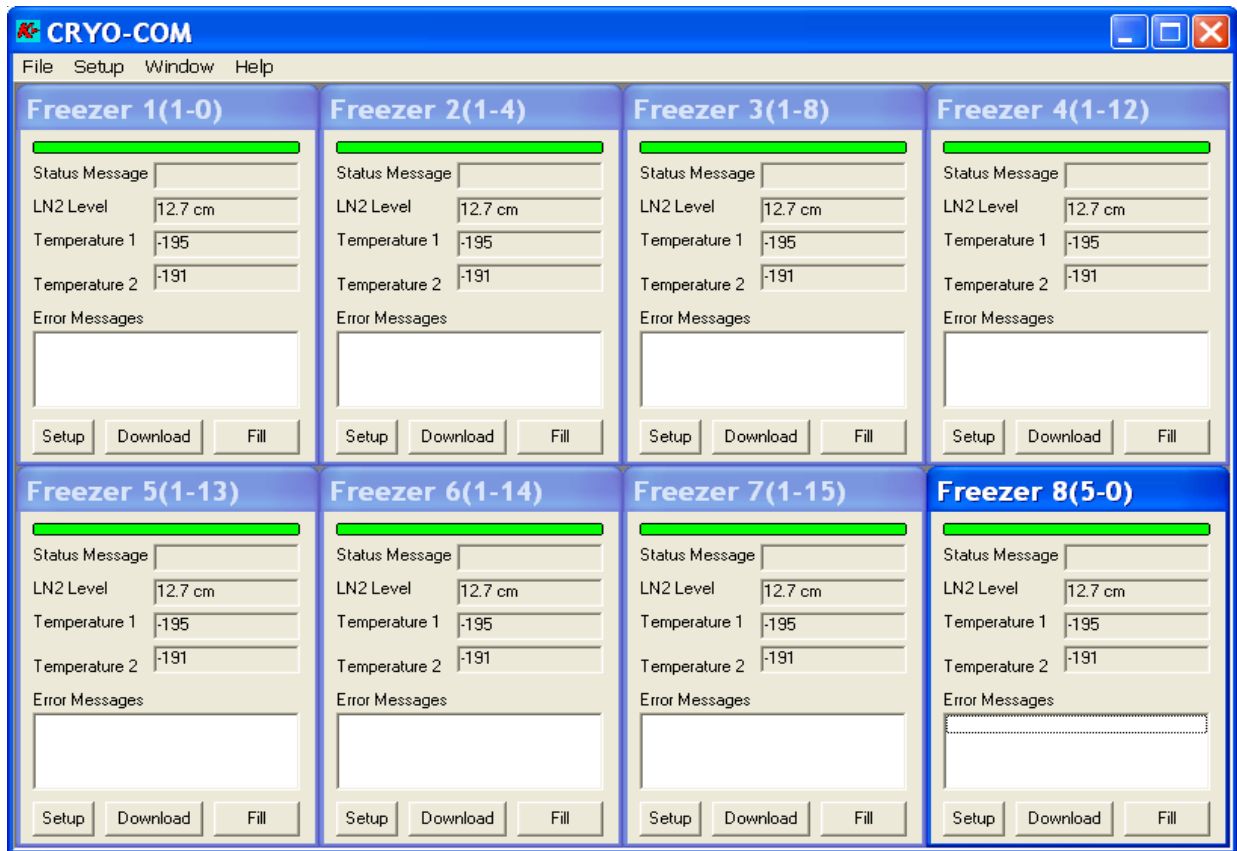


PACER DIGITAL SYSTEMS

# Cryo-Com Software Interface System

Monitors and Communicates with your cryogenic freezers



- Color coded windows provide “At a glance” status of the freezers.
- Freezer settings can be easily changed from the computer.
- The freezer ID feature allows use of familiar freezer names.
- Audit information on freezer setting changes provides accountability.
- Audit information on freezer operation provides validity.
- The automatic date feature eliminates errors with tracking audit files.
- The export feature allows for quick setup of new freezers.



Pacer Digital Systems, Inc.  
8658 Castle Park Drive  
Indianapolis, IN 46256  
Tel/Fax: 317-849-7887  
www.pacerdigital.com

# Cryo-Com Software Interface System

## Minimum Requirements

- Windows 95, 98, ME, XP Operating System
- Pentium Grade Processor
- CD Drive
- 2 Mb of disk space for program

## Control System Compatibility

- Works with Taylor-Wharton freezers with the Kryos Control System.
- Works with Cryosafe freezers with the Protector Plus Control System.
- Works with the Kryos-T temperature monitor.

## Communications Protocol

RS-232 Serial Communications

## Maximum Number of Freezers

- 7 freezers per serial port
- USB compatibility allows for the addition of serial ports expanding the number of freezers that can be connected.

## Date Storage Limits

The data is stored in ASCII text. The amount of data which can be stored is limited only by the size of the hard disk.

## Accessories and Part Numbers

- |                |  |
|----------------|--|
| CryoCom V3.0   | Cryo-Com Software V3.0                                   |
| CC-SS          | Smart Switch for Cryo-Com system.                        |
| CC-X           | Cryo-Com System for X number of freezers.                |
| CC-SSKR-CAB-10 | 10' Shielded Cable for Smart Switch to Kryos connection. |
| CC-SSSS-CAB-4  | 4' Shielded Cable for Smart Switches.                    |
| USB-2          | USB to 2 RS-232 Serial DB9 Male Ports.                   |
| USB-4          | USB to 4 RS-232 Serial DB9 Male Ports.                   |
| USB-8          | USB to 8 RS-232 Serial DB9 Male Ports.                   |
| USB-16         | USB to 16 RS-232 Serial DB9 Male Ports.                  |
| V4.03C         | EPROM for control to interface to Cryo-Com.              |

